





































[Previous](#)

[Next](#)



























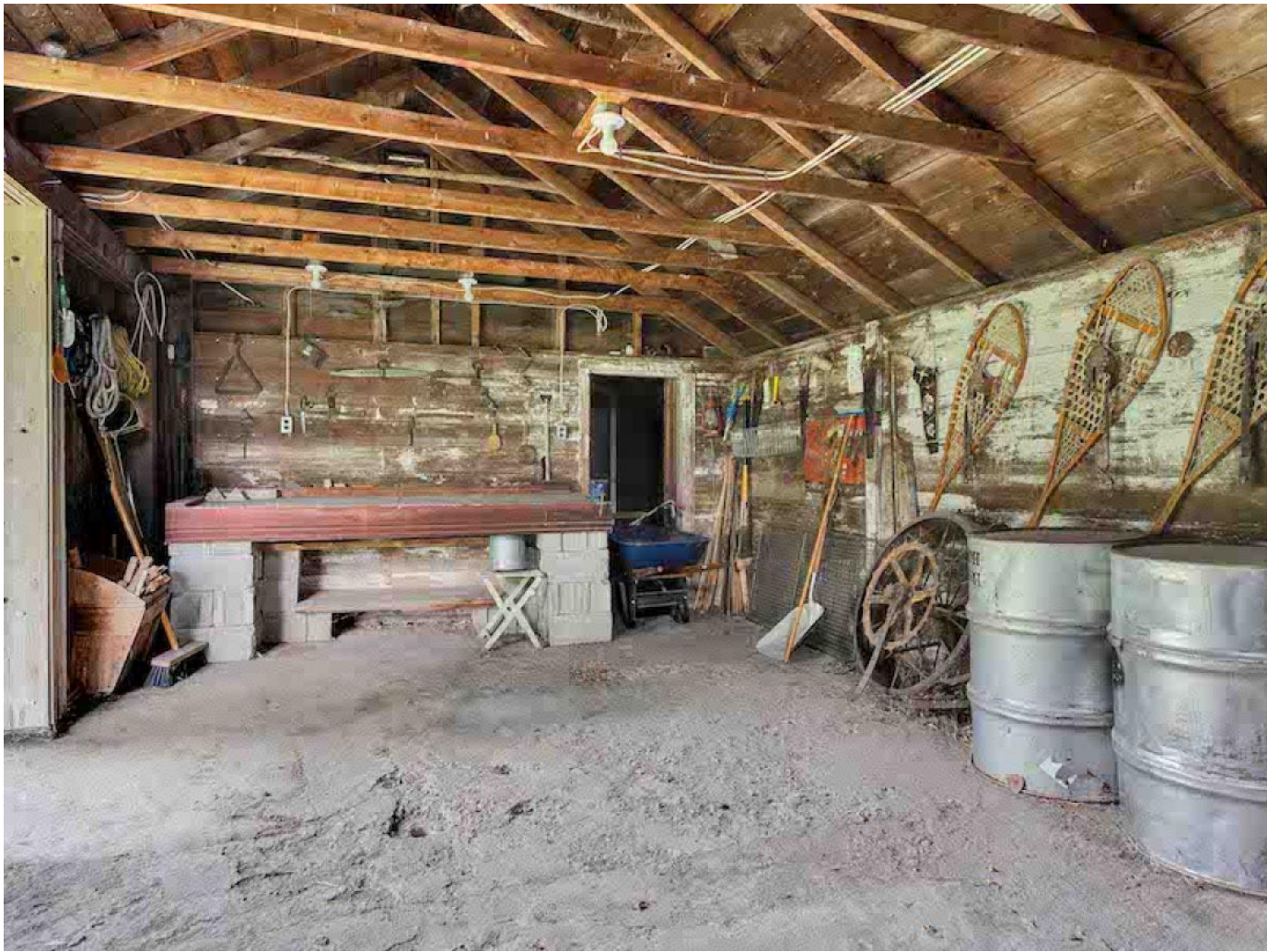
















































## Description

40 ACRES JUST 30 MINUTES TO THE CITY! The property was developed by the homesteading Rasmussen family that goes back to 1877. The 40-acre homestead features a balance of productive farmland and natural assets. With 32-acres of farmable land and a sand and gravel deposit, the property offers excellent income potential. The property's high water table ensures a reliable source of naturally filtered water making it ideal for domestic purposes, ponds, irrigation and agriculture. The 8-acre yard site is landscaped with a variety of mature trees and a pond. The privacy of the yard site is an ideal setting for a dream house or a minimalist retreat. Whether you're looking for a working farm, a personal retreat or an investment, this property has it.

Family Room (M) 11.5X17.83

Kitchen (M) 9.5X12.5

Three Piece Bath (M)

Bedroom (U) 13.58X12.5

Bedroom (U) 7.83X12

If you would like to view this property or are looking for additional information, please contact me.

Disclaimer: This information obtained is deemed to be reliable, but not guaranteed to the accuracy, correctness, and completeness of this information. Please note the information may change or withdrawal without notice.

\$449,900.00

Call Us: 204-989-7900

Email Us: [derekdaneault@royalpage.ca](mailto:derekdaneault@royalpage.ca)

2Bedrooms

1.00Bath

873SqFt

[Print To PDF](#)