





























[Previous](#)

[Next](#)



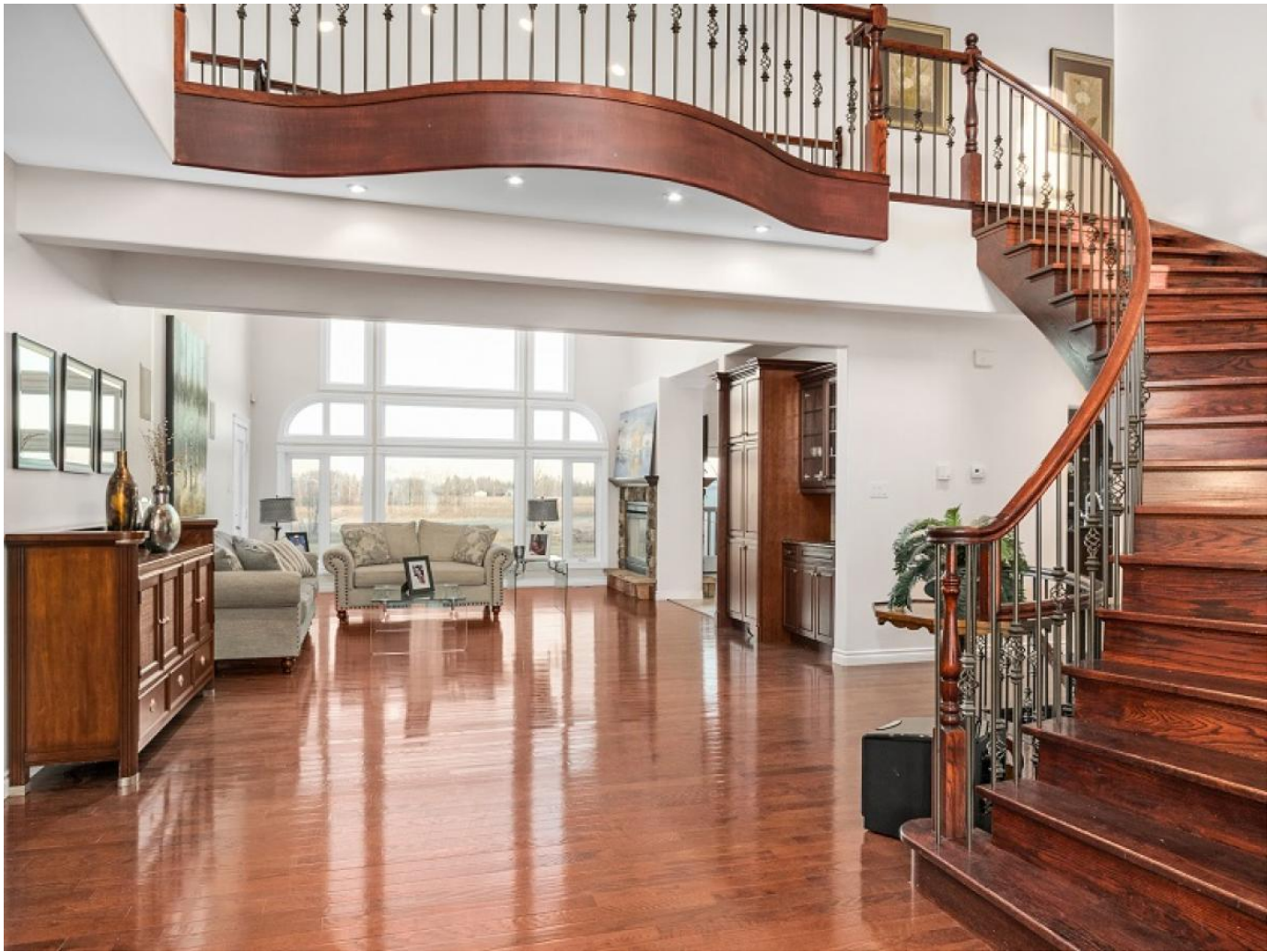




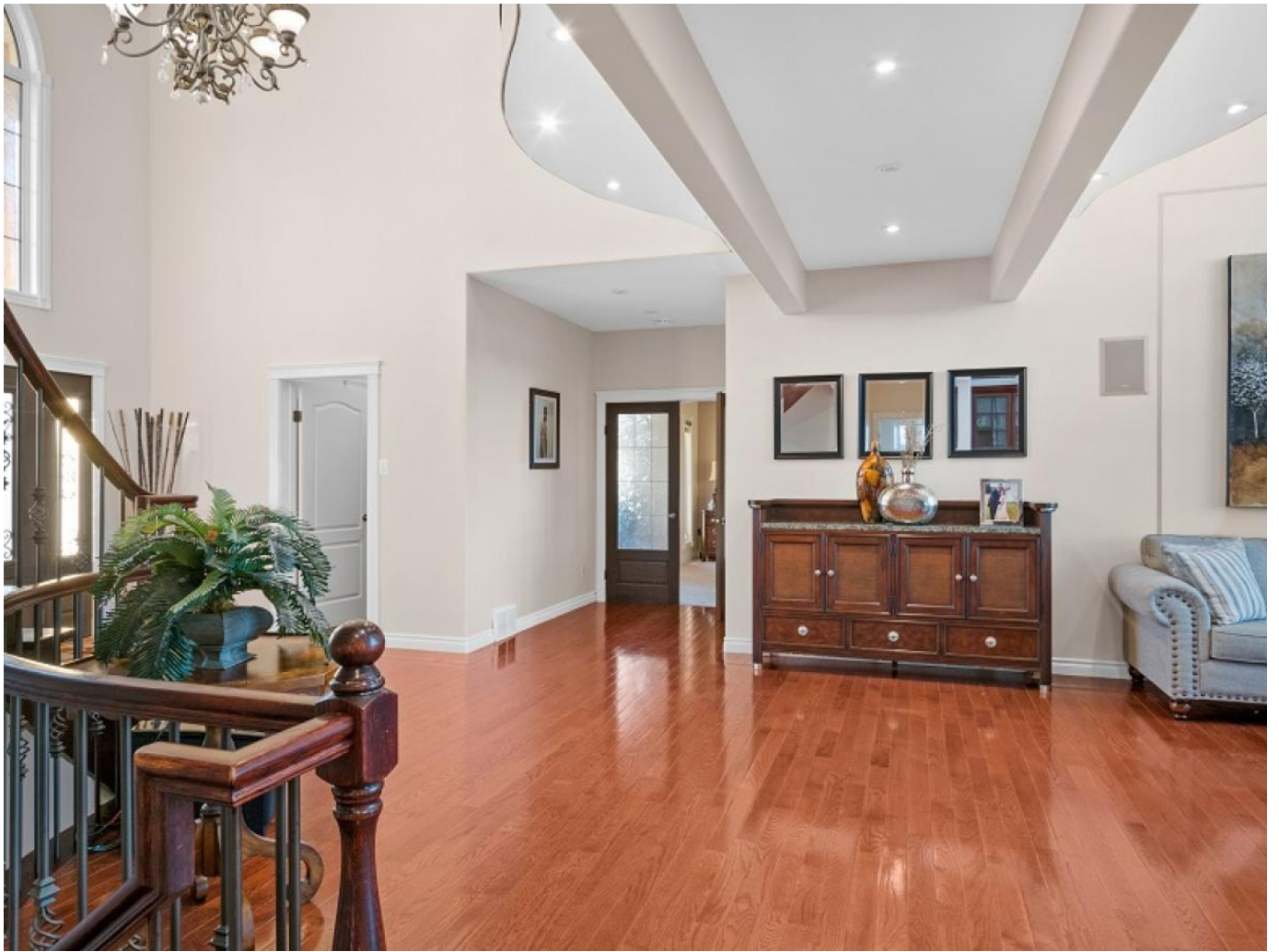


























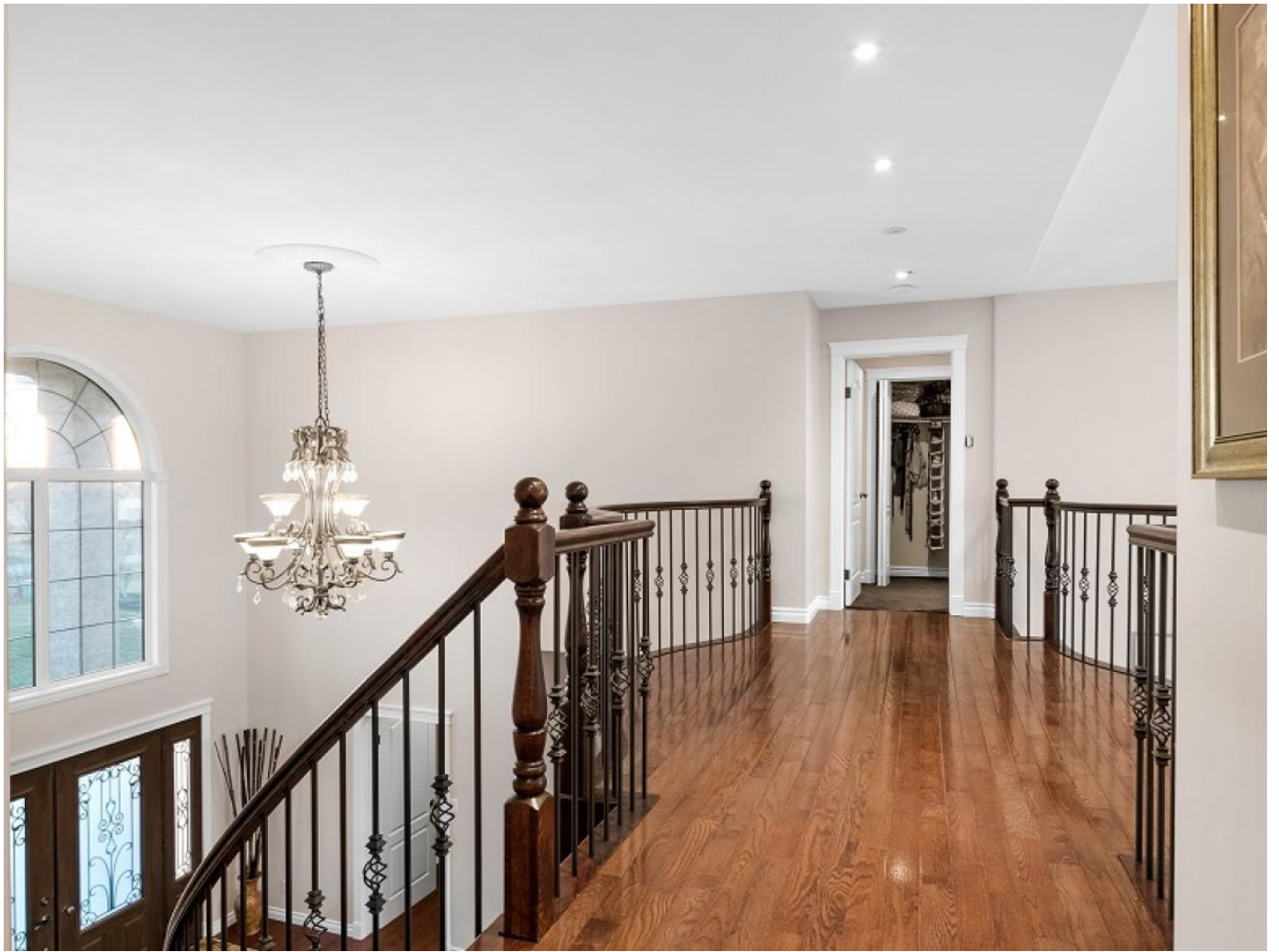


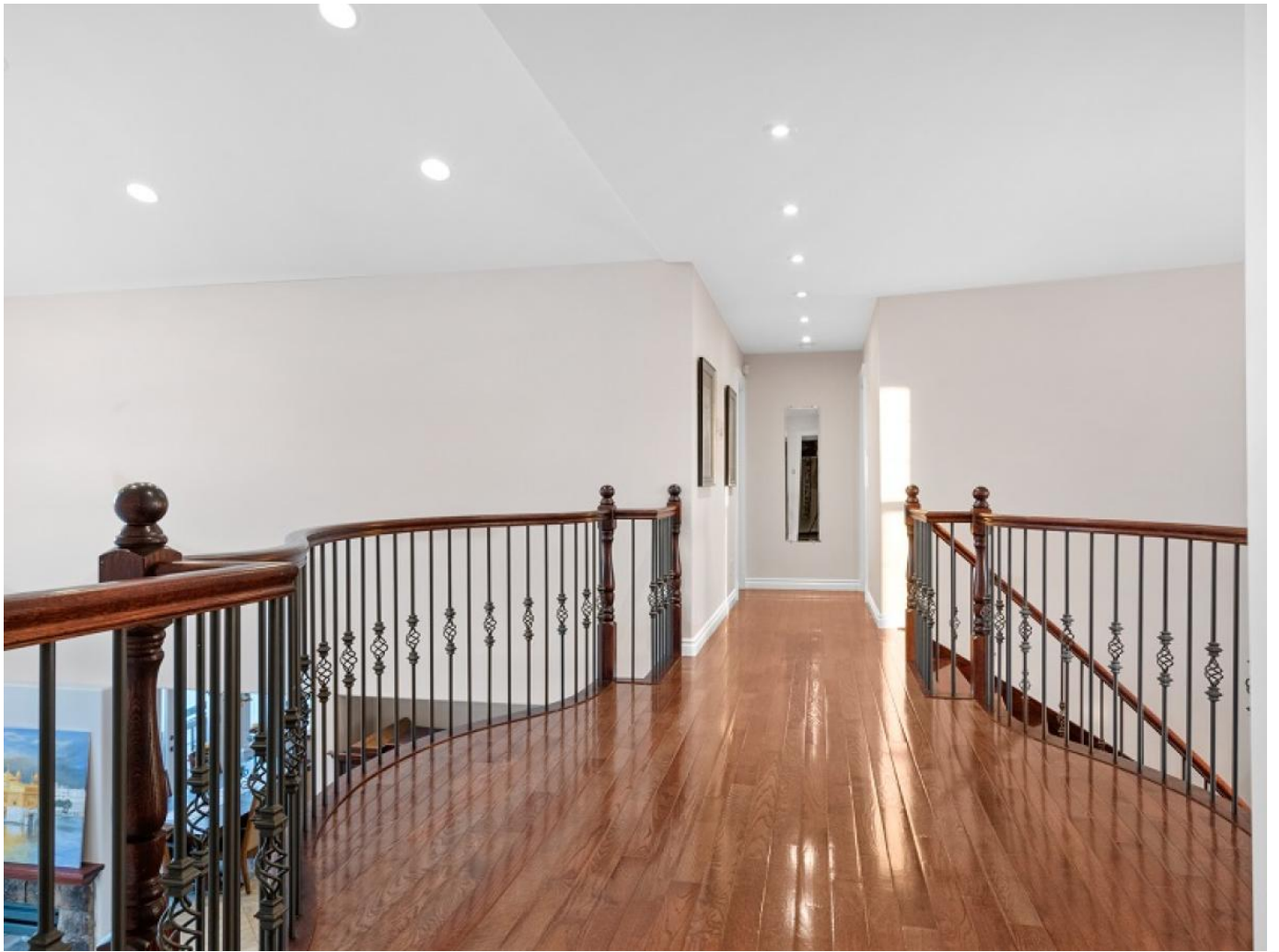








































Description

This one of a kind 2 storey is ideal for a large blended family or growing family! Features include 7 bedrooms , 6 full/2 half baths, 4 fireplaces, full finished lower level, 2 decks & a quadruple attached garage. Large foyer with grand arched wrought iron staircase leads you to the 2nd floor Bridgeway. The living room offers floor to ceiling windows up to the 2nd floor, a 2 sided fireplace & access to covered deck. The chef's style island eat-in kitchen offers s/s appliances, granite counters & large dining area with access to deck. The master bedroom suite offers a lounge area with fireplace & a deluxe 5 pc ensuite. Arched staircase to the fully finished lower level. This custom built home offers structural wood floor, piled foundation, steel beam, geothermal heating, direct access to lower level from garage & more. Heated 4-car attached garage, circular driveway & additional parking for your RV or boat. All this situated on a 1.40 acre lot mins to amenities.

Flooring: Wall-to-wall carpet, Tile, Wood

Sewer: Septic Tank & Field

Heating: Forced Air Natural Gas, Geo-Thermal

Parking: Quadruple Multiple Attached, Front Drive Access, Insulated, ,Heated, Oversized; Enclsd: 4

Site Influence: Landscaped deck, Shopping Nearby

Features: Air Conditioning-Central, Closet Organizers, Cook Top, Deck, Hood Fan, High-Efficiency Furnace, Jetted Tub, Oven built in, Structural wood basement floor

Goods Incl: Dryer, Dishwasher, Refrigerator, Garage door opener, Garage door opener remote(s), Microwave, Stove, Window Coverings, Washer, Water Softener

ROOM DIMENSIONS:

Living Room (M) 19.33X16

Eat-In Kitchen (M) 23X24

Master Bedroom (M) 25X14.5

5 Piece En Bath (M)

Bedroom (M) 20.67X15.58

4 Piece En Bath (M)

Laundry Room (M)

Two Piece Washroom (M)

Bedroom (U) 13.83X13.25

4 Piece En Bath (U)

Bedroom (U) 22X13

4 Piece En Bath (U)

Bedroom (U) 13.9X18.17

4 Piece En Bath (U)

Recreation Room (L) 24X22

Games Area (L) 13.67X18

Two Piece Wabsroom (L)

Bedroom (L) 19.42X13.83

Bedroom (L) 16.17X11

Four Piece Bath (L)

If you would like to view this property or are looking for additional information, please contact me.

Disclaimer: This information obtained is deemed to be reliable, but not guaranteed to the accuracy, correctness, and completeness of this information. Please note the information may change or withdrawal without notice.

\$999,900.00

Call Us: 204-989-7900

Email Us: derekdaneault@royalpage.ca

7Bedrooms

8.00Bath

4100SqFt

[Print To PDF](#)