

[Previous](#)

[Next](#)

























































































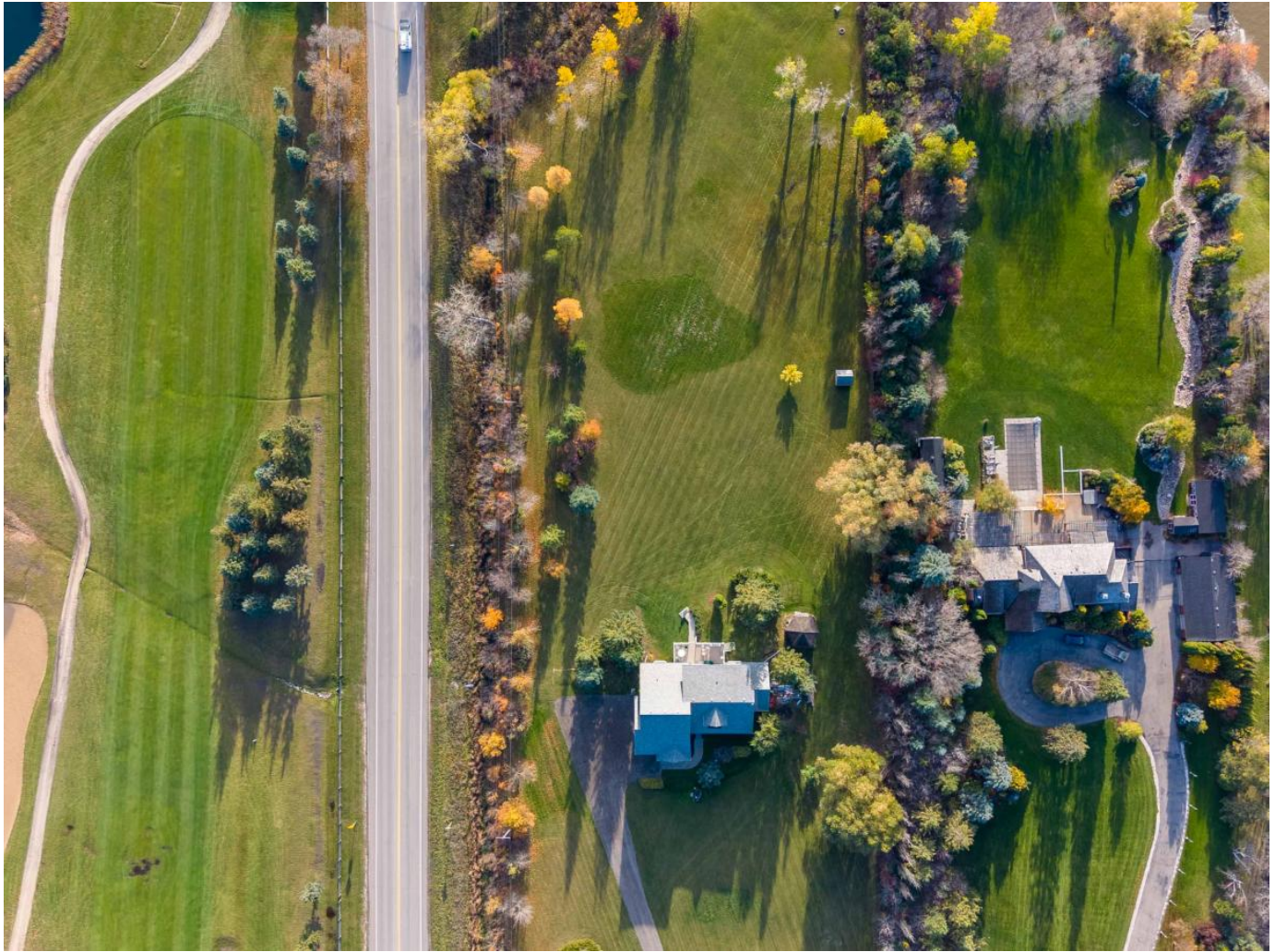












Description

SS 4/2 OTP 4/9. Welcome to this custom-built 2240 sqft 2 storey residence set on a 2.75-acre riverfront estate in St. Andrews, perfectly located across Larters Golf Course and just minutes to the Perimeter. The elegant layout welcomes you into the living room and home office, creating refined yet comfortable living spaces. The chef-inspired kitchen showcases extensive cabinetry and generous workspace, seamlessly connecting to a sun-filled family+dining area with access to the elevated deck overlooking the grounds. The main floor primary suite is a true retreat, complete with walk-in closet, private deck access, and a spa-like 3-piece ensuite. Main floor laundry and a 3-piece bath lead to the oversized 26x26 insulated double attached garage. The upper level features 3 spacious bedrooms and a 4pc bath, each offering picturesque views of the river and surrounding landscape. The basement is fully finished with a spacious rec room, bedroom and convenient full bath. Outdoors, the beautifully treed grounds offers an exceptional atmosphere and

stunning riverfront views, highlighted by a charming gazebo and gently tiered terrain leading to the water's edge, perfect for enjoying the peaceful riverfront setting.

\$999,990.00

Call Us: 204-989-7900

Email Us: derekdaneault@royallepage.ca

5Bedrooms

4.00Bath

2240SqFt

[Print To PDF](#)