





[Previous](#)

[Next](#)







































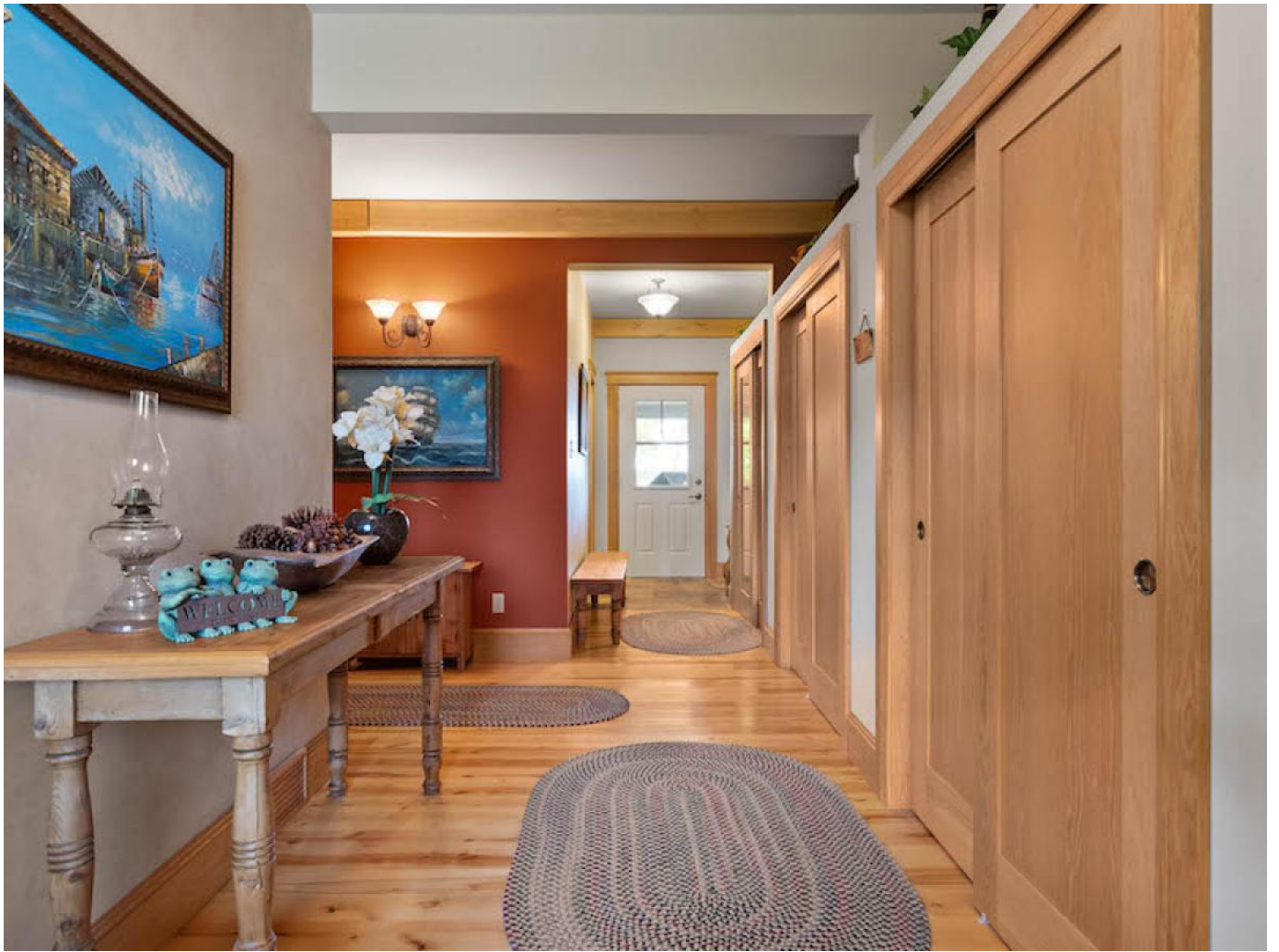






































































































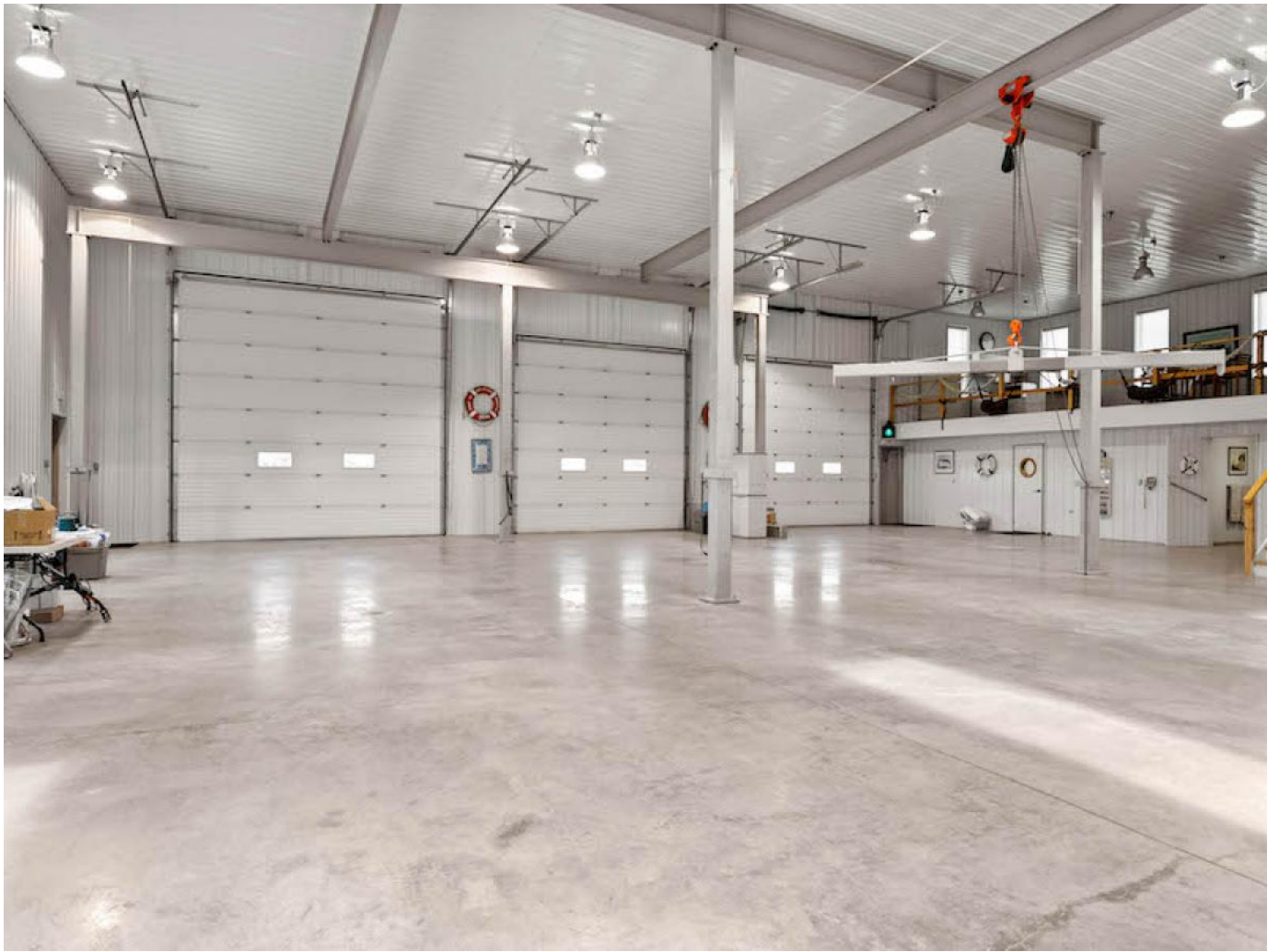
















## Description

ONE-OF-A-KIND PROPERTY! Situated on a sprawling 20 acre park-like lot close to Birds Hill Park is this 3,200 SF, 3 bed, 3 bath home featuring a 4,800 SF workshop & 2 additional 4,800 SF buildings! The living room offers a soaring 20 ft vaulted ceiling with white oak timber beams, a wood burning stone fireplace, a dining area, and access to the 3 season & 4 season sunrooms & backyard - perfect for hosting! The kitchen features high quality appliances, a large tiered island, and plenty of cabinet space. 2 bedrooms & 2 3 piece baths complete the main floor. The upper level features a loft overlooking the main floor, and the primary bedroom retreat with vaulted ceilings, a deluxe 4 piece ensuite with heated floors, and access to the large walk-in closet & gym. The lower level rec room offers a large games area & ample storage space. Double attached garage. The large commercial workshop includes mezzanine with kitchen, bath & laundry room. House & workshop have geothermal

with infloor heating. Perfect for aviation, mechanical & equestrian enthusiasts!

Living Room (M) 24.5X17.5

Dining Room (M) 15X11.5

Kitchen (M) 17.67X11

Sunroom (M) 33.33X11.67

Bedroom (M) 11X11.5

Bedroom (M) 11X9.52

Three Piece Bath (M)

Three Piece Bath (M)

Primary Bedroom (U) 16X16

4 Piece En Bath (U)

Loft (U) 20.5X15.5

Gym (U)

Game Room (L) 30X25

If you would like to view this property or are looking for additional information, please contact me.

Disclaimer: This information obtained is deemed to be reliable, but not guaranteed to the accuracy, correctness, and completeness of this information. Please note the information may change or withdrawal without notice.

\$2,979,900.00

Call Us: 204-989-7900

Email Us: [derekdaneault@royallepage.ca](mailto:derekdaneault@royallepage.ca)

3Bedrooms

3.00Bath



3200SqFt

[Print To PDF](#)